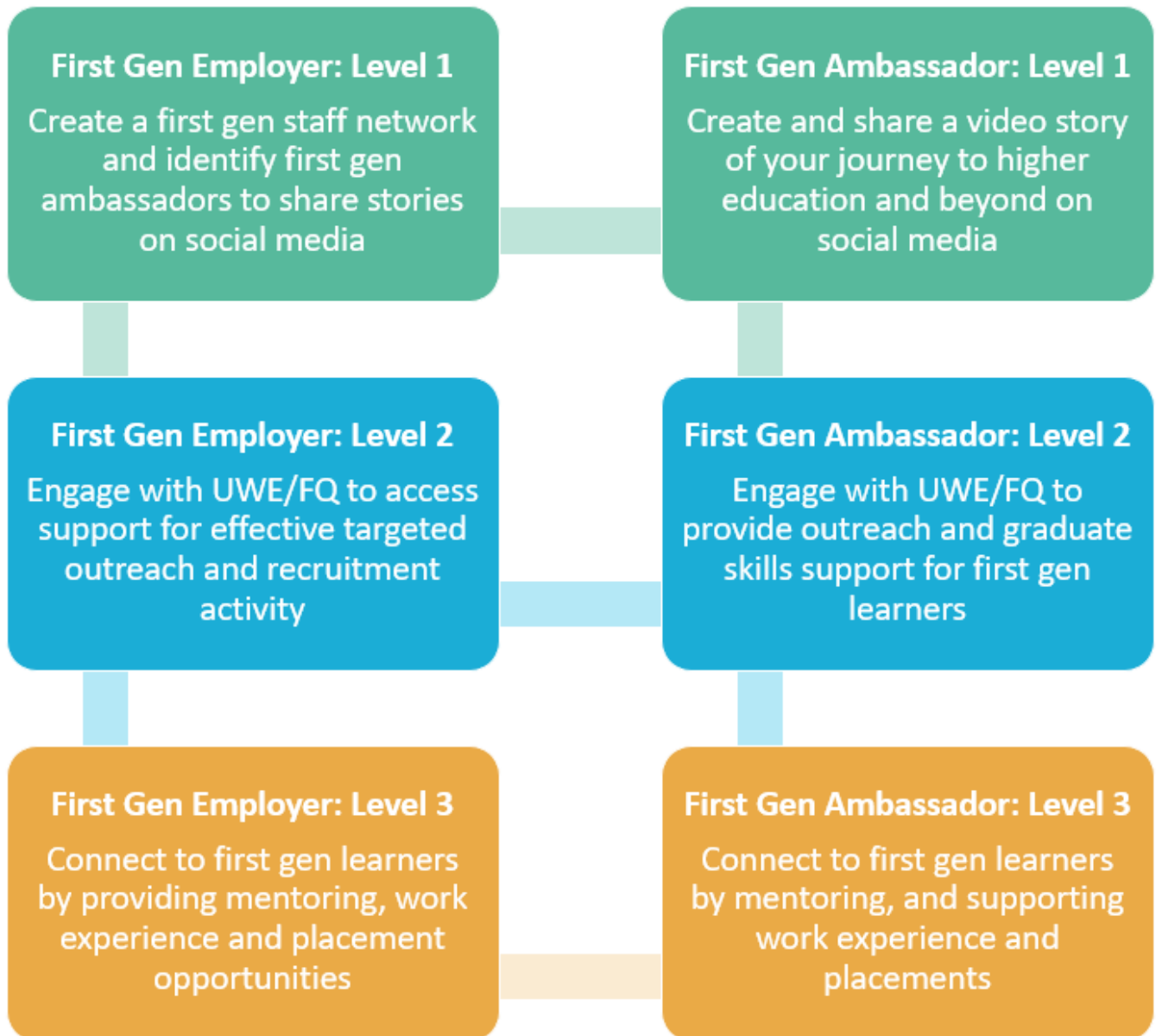


## #IAFG Employer and Ambassador Commitments



First Gen Employer Commitments		First Gen Ambassador Commitments
Level 1	<ul style="list-style-type: none"> <li>➤ Find a senior member of your team to become a First Gen Ambassador and share their story on social media</li> <li>➤ Share your employee's first gen story within your organisation</li> <li>➤ Set up a First Gen network within your organisation to support staff to network and feel comfortable telling their stories</li> </ul>	<ul style="list-style-type: none"> <li>➤ Create your story using our Letter to Yourself template</li> <li>➤ Provide a short film (1 minute long) explaining why you are a First Gen Ambassador</li> <li>➤ Share your story on social media using the #IAmFirstGen hashtag</li> </ul>
Level 2	<ul style="list-style-type: none"> <li>➤ Offer a workplace tour (including a virtual tour) guided by a First Gen Ambassador from your organisation</li> <li>➤ Access specialist support to target effective outreach to help you maximise the success of your social mobility work</li> <li>➤ Access specialist support to target effective graduate recruitment activities to maximise your success</li> </ul>	<ul style="list-style-type: none"> <li>➤ Take part in a Q&amp;A session for First Gen learners aged 14 – 21</li> <li>➤ Co-create resources such as "A Day in the Life Of"</li> <li>➤ Support mock interviews or provide CV advice to First Gen learners</li> </ul>
Level 3	<p><i>At least one of the following:</i></p> <ul style="list-style-type: none"> <li>➤ Provide work experience or work placement opportunities for First Gen learners</li> <li>➤ Develop collaborative programme of outreach and graduate recruitment activities with UWE/Future Quest</li> <li>➤ Support First Gen learners with digital enabler bursaries</li> </ul>	<p><i>At least one of the following:</i></p> <ul style="list-style-type: none"> <li>➤ Become a First Gen mentor and support a learner over a longer period of term</li> <li>➤ Secure support from your employer for work experience or work placement opportunities</li> <li>➤ Help us connect your employer to our student and outreach teams to maximise the impact of your social mobility work</li> </ul>